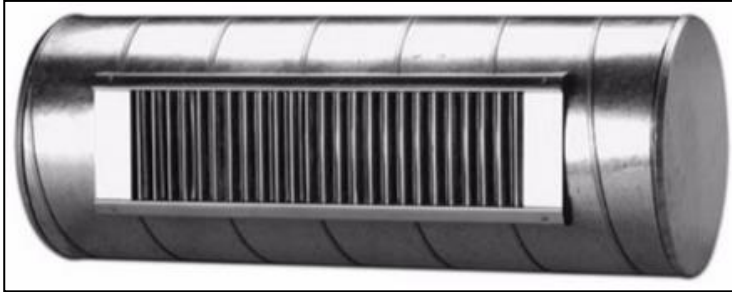


SPIRAL DUCT GRILLE

Model: SDG



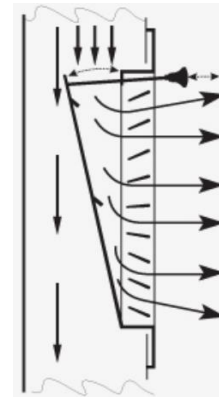
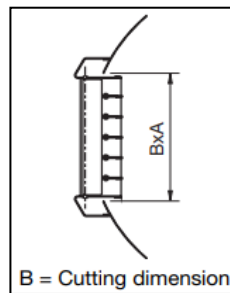
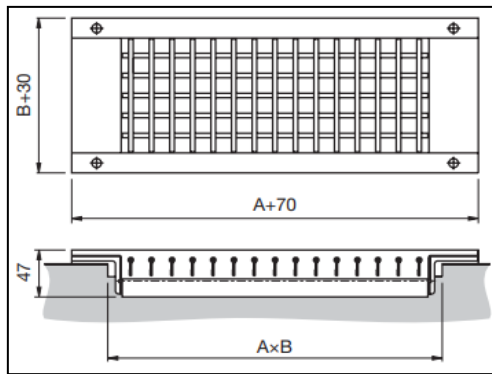
The range of spiral duct grilles have been designed for fitting directly to circular ducts without the need for a special take-off.

Made from galvanised steel plate.

Comes with a row of adjustable blades with vertical blades in front with optional damper if required.

Suitable for supply or exhaust.

Fixing is by self tapping screws through pre-drilled in grille frame



Available Sizes:

525mm x 75mm Spiral Duct Grille / Double Deflection / Duct Size 160-400
525mm x 75mm Spiral Duct Grille / Double Deflection / Duct Size 160-400 + Damper
425mm x 125mm Spiral Duct Grille / Double Deflection / Duct Size 250-900
425mm x 125mm Spiral Duct Grille / Double Deflection / Duct Size 250-900 + Damper
525mm x 125mm Spiral Duct Grille / Double Deflection / Duct Size 250-900
525mm x 125mm Spiral Duct Grille / Double Deflection / Duct Size 250-900 + Damper
625mm x 125mm Spiral Duct Grille / Double Deflection / Duct Size 250-900
625mm x 125mm Spiral Duct Grille / Double Deflection / Duct Size 250-900 + Damper
425mm x 225mm Spiral Duct Grille / Double Deflection / Duct Size 500-1400
425mm x 225mm Spiral Duct Grille / Double Deflection / Duct Size 500-1400 + Damper
525mm x 225mm Spiral Duct Grille / Double Deflection / Duct Size 500-1400
525mm x 225mm Spiral Duct Grille / Double Deflection / Duct Size 500-1400 + Damper

POLYAIRE UK

Units 3 & 4, Torridge Close,
Telford Way Business Park,
Kettering, Northants,
ENGLAND, NN16 8PY
Telephone: 01536 519922
sales@polyaire.co.uk