

polyaire

AIRCONDITIONING PRODUCTS



Units 3 & 4, Torridge Close
Telford Way Industrial Estate
Kettering, Northants
ENGLAND NN16 8PY
Telephone: 01536 519 922
sales@polyaire.co.uk
www.polyaire.co.uk



Part No.	Description
----------	-------------



Insulated Flex

110000/10	Insulated 102mm Ø x 10-meter length Flexible Ductwork Fire Rated
110001A/10	Insulated 127mm Ø x 10-meter length Flexible Ductwork Fire Rated
110001/10	Insulated 152mm Ø x 10-meter length Flexible Ductwork Fire Rated
110003/10	Insulated 204mm Ø x 10-meter length Flexible Ductwork Fire Rated
110005/10	Insulated 254mm Ø x 10-meter length Flexible Ductwork Fire Rated
110007/10	Insulated 305mm Ø x 10-meter length Flexible Ductwork Fire Rated
110008/10	Insulated 315mm Ø x 10-meter length Flexible Ductwork Fire Rated
110009/10	Insulated 356mm Ø x 10-meter length Flexible Ductwork Fire Rated
110011/10	Insulated 406mm Ø x 10-meter length Flexible Ductwork Fire Rated



Non-Insulated Flex

160074/10	MCFR 102mm Ø x 10-meter length Flexible Ductwork Metalized Core Fire Rated
160074A/10	MCFR 127mm Ø x 10-meter length Flexible Ductwork Metalized Core Fire Rated
160075/10	MCFR 152mm Ø x 10-meter length Flexible Ductwork Metalized Core Fire Rated
160076/10	MCFR 203mm Ø x 10-meter length Flexible Ductwork Metalized Core Fire Rated
160077/10	MCFR 254mm Ø x 10-meter length Flexible Ductwork Metalized Core Fire Rated
160078/10	MCFR 305mm Ø x 10-meter length Flexible Ductwork Metalized Core Fire Rated
160079/10	MCFR 315mm Ø x 10-meter length Flexible Ductwork Metalized Core Fire Rated
160080/10	MCFR 355mm Ø x 10-meter length Flexible Ductwork Metalized Core Fire Rated
160081/10	MCFR 406mm Ø x 10-meter length Flexible Ductwork Metalized Core Fire Rated



Black Plastic Combi Flex

170000/6	102mm Ø x 5-meter length Black Combi Flexible Ducting
170001/6	127mm Ø x 5-meter length Black Combi Flexible Ducting
170002/6	152mm Ø x 5-meter length Black Combi Flexible Ducting
170003/6	203mm Ø x 5-meter length Black Combi Flexible Ducting
170004/6	254mm Ø x 5-meter length Black Combi Flexible Ducting
170005/6	305mm Ø x 5-meter length Black Combi Flexible Ducting
170006/6	315mm Ø x 5-meter length Black Combi Flexible Ducting
170007/6	355mm Ø x 5-meter length Black Combi Flexible Ducting
170008/6	406mm Ø x 5-meter length Black Combi Flexible Ducting



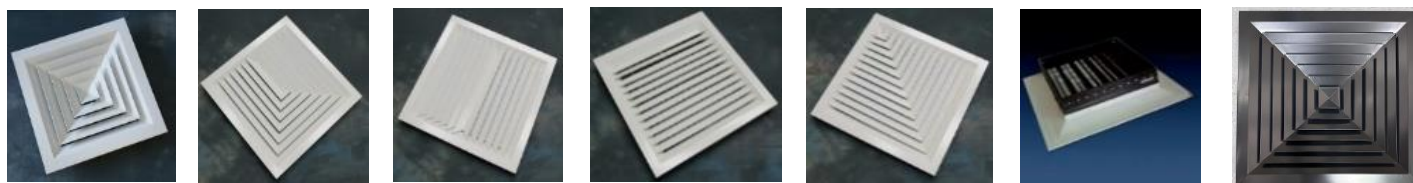
Jet Nozzle (JNS) (RAL 9010)

210100	100mm Ø Jet Nozzle - JNS (148mm Ø Face Size)
210125	125mm Ø Jet Nozzle - JNS (170mm Ø Face Size)
210150	150mm Ø Jet Nozzle - JNS (200mm Ø Face Size)
210160	160mm Ø Jet Nozzle - JNS (210mm Ø Face Size)
210200	200mm Ø Jet Nozzle - JNS (255mm Ø Face Size)
210250	250mm Ø Jet Nozzle - JNS (301mm Ø Face Size)
210315	315mm Ø Jet Nozzle - JNS (380mm Ø Face Size)
210400	400mm Ø Jet Nozzle - JNS (467mm Ø Face Size)

Louvre Faced Diffuser (4, 3, 2, 1 Way + Corner) with or without OBD

(Available in RAL 9010 & RAL 9016)

(595x595mm Available in RAL 9005 / Black)



248001	LFD 150 x 150mm Neck with 295 x 295mm Face Four Way Blow	RAL 9010
248001/6	LFD 150 x 150mm Neck with 295 x 295mm Face Four Way Blow + OBD	RAL 9010
248001 RAL9016	LFD 150 x 150mm Neck with 295 x 295mm Face Four Way Blow	RAL 9016
248001/6 RAL9016	LFD 150 x 150mm Neck with 295 x 295mm Face Four Way Blow + OBD	RAL 9016
248001/1W	LFD 150 x 150mm Neck with 295 x 295mm Face 1 Way Blow	RAL 9010
248001/2W	LFD 150 x 150mm Neck with 295 x 295mm Face 2 Way Blow	RAL 9010
248001/3W	LFD 150 x 150mm Neck with 295 x 295mm Face 3 Way Blow	RAL 9010
248001/6/1W	LFD 150 x 150mm Neck with 295 x 295mm Face 1 Way Blow + OBD	RAL 9010
248001/6/2W	LFD 150 x 150mm Neck with 295 x 295mm Face 2 Way Blow + OBD	RAL 9010
248001/6/3W	LFD 150 x 150mm Neck with 295 x 295mm Face 3 Way Blow + OBD	RAL 9010

248002/200 N	LFD 200 x 200mm Neck with 345 x 345mm Face Four Way Blow	RAL 9010
248002/200 N/6E	LFD 200 x 200mm Neck with 345 x 345mm Face Four Way Blow + OBD	RAL 9010
248002/200 N RAL9016	LFD 200 x 200mm Neck with 345 x 345mm Face Four Way Blow	RAL 9016
248002/200 N/6E RAL9016	LFD 200 x 200mm Neck with 345 x 345mm Face Four Way Blow + OBD	RAL 9016

248002	LFD 225 x 225mm Neck with 370 x 370mm Face Four Way Blow	RAL 9010
248002/7	LFD 225 x 225mm Neck with 370 x 370mm Face Four Way Blow + OBD	RAL 9010
248002 RAL9016	LFD 225 x 225mm Neck with 370 x 370mm Face Four Way Blow	RAL 9016
248002/7 RAL9016	LFD 225 x 225mm Neck with 370 x 370mm Face Four Way Blow + OBD	RAL 9016
248002/1W	LFD 225 x 225mm Neck with 370 x 370mm Face 1 Way Blow	RAL 9010
248002/2W	LFD 225 x 225mm Neck with 370 x 370mm Face 2 Way Blow	RAL 9010
248002/3W	LFD 225 x 225mm Neck with 370 x 370mm Face 3 Way Blow	RAL 9010
248002/7/1W	LFD 225 x 225mm Neck with 370 x 370mm Face 1 Way Blow + OBD	RAL 9010
248002/7/2W	LFD 225 x 225mm Neck with 370 x 370mm Face 2 Way Blow + OBD	RAL 9010
248002/7/3W	LFD 225 x 225mm Neck with 370 x 370mm Face 3 Way Blow + OBD	RAL 9010

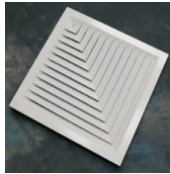
248002/250 N	LFD 250 x 250mm Neck with 395 x 395mm Face Four Way Blow	RAL 9010
248002/250 N/7E	LFD 250 x 250mm Neck with 395 x 395mm Face Four Way Blow + OBD	RAL 9010
248002/250 N RAL9016	LFD 250 x 250mm Neck with 395 x 395mm Face Four Way Blow	RAL 9016
248002/250 N/7E RAL9016	LFD 250 x 250mm Neck with 395 x 395mm Face Four Way Blow + OBD	RAL 9016

248003	LFD 300 x 300mm Neck with 450 x 450mm Face Four Way Blow	RAL 9010
248003/8	LFD 300 x 300mm Neck with 450 x 450mm Face Four Way Blow + OBD	RAL 9010
248003 RAL9016	LFD 300 x 300mm Neck with 450 x 450mm Face Four Way Blow	RAL 9016
248003/8 RAL9016	LFD 300 x 300mm Neck with 450 x 450mm Face Four Way Blow + OBD	RAL 9016
248003/1W	LFD 300 x 300mm Neck with 450 x 450mm Face 1 Way Blow	RAL 9010
248003/2W	LFD 300 x 300mm Neck with 450 x 450mm Face 2 Way Blow	RAL 9010
248003/3W	LFD 300 x 300mm Neck with 450 x 450mm Face 3 Way Blow	RAL 9010
248003/8/1W	LFD 300 x 300mm Neck with 450 x 450mm Face 1 Way Blow + OBD	RAL 9010
248003/8/2W	LFD 300 x 300mm Neck with 450 x 450mm Face 2 Way Blow + OBD	RAL 9010
248003/8/3W	LFD 300 x 300mm Neck with 450 x 450mm Face 3 Way Blow + OBD	RAL 9010

248004/495x495	LFD 350 x 350mm Neck with 495 x 495mm Face 4-Way Blow / RAL9010 (to fit 500mm Sq ceiling grid) * NEW *	
248004/495x495/9E	LFD 350 x 350mm Neck with 495 x 495mm Face 4-Way Blow + OBD / RAL9010 (to fit 500mm Sq ceiling grid) * NEW *	

248004	LFD 375 x 375mm Neck with 520 x 520mm Face Four Way Blow	RAL 9010
248004/9	LFD 375 x 375mm Neck with 520 x 520mm Face Four Way Blow + OBD	RAL 9010
248004 RAL9016	LFD 375 x 375mm Neck with 520 x 520mm Face Four Way Blow	RAL 9016
248004/9 RAL9016	LFD 375 x 375mm Neck with 520 x 520mm Face Four Way Blow + OBD	RAL 9016
248004/1W	LFD 375 x 375mm Neck with 520 x 520mm Face 1 Way Blow	RAL 9010
248004/2W	LFD 375 x 375mm Neck with 520 x 520mm Face 2 Way Blow	RAL 9010
248004/3W	LFD 375 x 375mm Neck with 520 x 520mm Face 3 Way Blow	RAL 9010
248004/9/1W	LFD 375 x 375mm Neck with 520 x 520mm Face 1 Way Blow + OBD	RAL 9010
248004/9/2W	LFD 375 x 375mm Neck with 520 x 520mm Face 2 Way Blow + OBD	RAL 9010
248004/9/3W	LFD 375 x 375mm Neck with 520 x 520mm Face 3 Way Blow + OBD	RAL 9010

248005	LFD 450 x 450mm Neck with 595 x 595mm Face Four Way Blow	RAL 9010
248005/10	LFD 450 x 450mm Neck with 595 x 595mm Face Four Way Blow + OBD	RAL 9010
248005 RAL9016	LFD 450 x 450mm Neck with 595 x 595mm Face Four Way Blow	RAL 9016
248005/10 RAL9016	LFD 450 x 450mm Neck with 595 x 595mm Face Four Way Blow + OBD	RAL 9016
248005 RAL9005	LFD 450 x 450mm Neck with 595 x 595mm Face Four Way Blow	RAL 9005 Black * NEW *
248005/10 RAL9005	LFD 450 x 450mm Neck with 595 x 595mm Face Four Way Blow + OBD	RAL 9005 Black * NEW *
248005/1W	LFD 450 x 450mm Neck with 595 x 595mm Face 1 Way Blow	RAL 9010
248005/1W-RAL9016	LFD 450 x 450mm Neck with 595 x 595mm Face 1 Way Blow	RAL 9016
248005/2W	LFD 450 x 450mm Neck with 595 x 595mm Face 2 Way Blow	RAL 9010
248005/2W-RAL9016	LFD 450 x 450mm Neck with 595 x 595mm Face 2 Way Blow	RAL 9016
248005/3W	LFD 450 x 450mm Neck with 595 x 595mm Face 3 Way Blow	RAL 9010
248005/3W-RAL9016	LFD 450 x 450mm Neck with 595 x 595mm Face 3 Way Blow	RAL 9016
248005/10/1W	LFD 450 x 450mm Neck with 595 x 595mm Face 1 Way Blow + OBD	RAL 9010
248005/10/1W-RAL9016	LFD 450 x 450mm Neck with 595 x 595mm Face 1 Way Blow + OBD	RAL 9016
248005/10/2W	LFD 450 x 450mm Neck with 595 x 595mm Face 2 Way Blow + OBD	RAL 9010
248005/10/2W-RAL9016	LFD 450 x 450mm Neck with 595 x 595mm Face 2 Way Blow + OBD	RAL 9016
248005/10/3W	LFD 450 x 450mm Neck with 595 x 595mm Face 3 Way Blow + OBD	RAL 9010
248005/10/3W-RAL9016	LFD 450 x 450mm Neck with 595 x 595mm Face 3 Way Blow + OBD	RAL 9016
248005/TEG 8	LFD 450 x 450mm Neck with 595 x 595mm Face Four Way Blow - TEGULAR 8mm / RAL9010	* NEW *
248005/10/TEG 8	LFD 450 x 450mm Neck with 595 x 595mm Face Four Way Blow + OBD - TEGULAR 8mm / RAL9010	* NEW *
248005/TEG 16	LFD 450 x 450mm Neck with 595 x 595mm Face Four Way Blow - TEGULAR 16mm / RAL9010	* NEW *
248005/10/TEG 16	LFD 450 x 450mm Neck with 595 x 595mm Face Four Way Blow + OBD - TEGULAR 16mm / RAL9010	* NEW *



Louvre Faced Diffuser (2 Way Corner) with or without OBD (RAL 9010)

(595x595mm Also available in RAL9016)

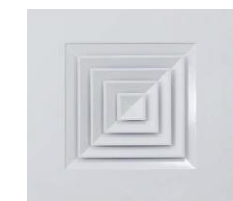
349001/2WC	LFD 150 x 150mm Neck with 295 x 295mm Face 2 Way Corner Blow	RAL 9010
349001/6/2WC	LFD 150 x 150mm Neck with 295 x 295mm Face 2 Way Corner Blow + OBD	RAL 9010
349002/2WC	LFD 225 x 225mm Neck with 370 x 370mm Face 2 Way Corner Blow	RAL 9010
349002/7/2WC	LFD 225 x 225mm Neck with 370 x 370mm Face 2 Way Corner Blow + OBD	RAL 9010
349003/2WC	LFD 300 x 300mm Neck with 450 x 450mm Face 2 Way Corner Blow	RAL 9010
349003/8/2WC	LFD 300 x 300mm Neck with 450 x 450mm Face 2 Way Corner Blow + OBD	RAL 9010
349004/2WC	LFD 375 x 375mm Neck with 520 x 520mm Face 2 Way Corner Blow	RAL 9010
349004/9/2WC	LFD 375 x 375mm Neck with 520 x 520mm Face 2 Way Corner Blow + OBD	RAL 9010
349005/2WC	LFD 450 x 450mm Neck with 595 x 595mm Face 2 Way Corner Blow	RAL 9010
349005/10/2WC	LFD 450 x 450mm Neck with 595 x 595mm Face 2 Way Corner Blow + OBD	RAL 9010
349005/2WC/9016	LFD 450 x 450mm Neck with 595 x 595mm Face 2 Way Corner Blow	RAL9016
349005/10/2WC/9016	LFD 450 x 450mm Neck with 595 x 595mm Face 2 Way Corner Blow + OBD	RAL9016



Classic Beval Face 4-Way Diffuser

(ABS Plastic)

231319	230 x 230mm neck (328 x 328mm Face) Classic Beval Face 4-Way Diffuser - ABS Plastic	**NEW**
231324	300 x 300mm neck (403 x 403mm Face) Classic Beval Face 4-Way Diffuser - ABS Plastic	**NEW**
231329	350 x 350mm neck (468 x 468mm Face) Classic Beval Face 4-Way Diffuser - ABS Plastic	**NEW**

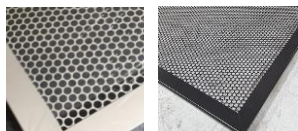
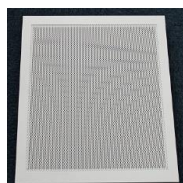


Plaque Ceiling Diffuser

(RAL9010)

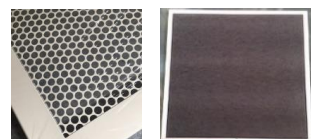
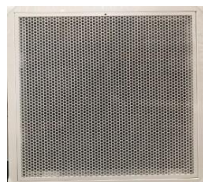
247800	PQCD - 595 x 595mm / 150 x 150mm Plaque Ceiling Diffuser / RAL9010	**NEW**
247801	PQCD - 595 x 595mm / 225 x 225mm Plaque Ceiling Diffuser / RAL9010	**NEW**
247802	PQCD - 595 x 595mm / 300 x 300mm Plaque Ceiling Diffuser / RAL9010	**NEW**
247803	PQCD - 595 x 595mm / 375 x 375mm Plaque Ceiling Diffuser / RAL9010	**NEW**

**Perforated Grille
(RAL 9010 & RAL9005)**



248101	595 x 595mm (Face Size) 550x550mm Neck Size / Fixed Core Perforated Grille / RAL9010
248101/RAL9005	595 x 595mm (Face Size) 550x550mm Neck Size / Fixed Core Perforated Grille / RAL9005 Black

**Perforated Grille with removable filter (Metal)
(RAL 9010)**



248102	595 x 595mm (Face Size) 550x550mm Neck Size / Perforated Grille + Removable Filter / Hinged
247207F	Filter for Perforated Grille / Hinged (248102)



**Metal Egg Crate Grille (Fixed Core)
(Standard Finish RAL 9010 - Also available stock in RAL 9016)
(595x595mm available stock in RAL9005/Black)**



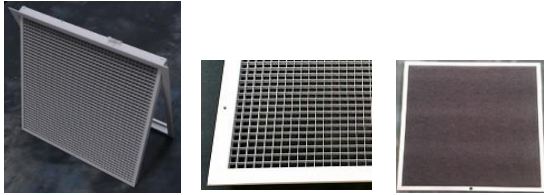
248592 F/C	100 x 100mm Neck (145x145mm Face) \ Metal Egg-Crate Fixed Core	RAL9010
248592/1E	100 x 100mm Neck (145x145mm Face) \ Metal Egg-Crate Fixed Core + OBD	RAL9010
248592 F/C RAL9016	100 x 100mm Neck (145x145mm Face) \ Metal Egg-Crate Fixed Core	RAL9016
248592/1E RAL9016	100 x 100mm Neck (145x145mm Face) \ Metal Egg-Crate Fixed Core + OBD	RAL9016
248593 F/C	150 x 150mm Neck (195x195mm Face) \ Metal Egg-Crate Fixed Core	RAL9010
248593/6	150 x 150mm Neck (195x195mm Face) \ Metal Egg-Crate Fixed Core + OBD	RAL9010
248593 F/C RAL9016	150 x 150mm Neck (195x195mm Face) \ Metal Egg-Crate Fixed Core	RAL9016
248593/6 RAL9016	150 x 150mm Neck (195x195mm Face) \ Metal Egg-Crate Fixed Core + OBD	RAL9016
248595 F/C	200 x 200mm Neck (245x245mm Face) \ Metal Egg-Crate Fixed Core	RAL9010
248595/6E	200 x 200mm Neck (245x245mm Face) \ Metal Egg-Crate Fixed Core + OBD	RAL9010
248595 F/C RAL9016	200 x 200mm Neck (245x245mm Face) \ Metal Egg-Crate Fixed Core	RAL9016
248595/6E RAL9016	200 x 200mm Neck (245x245mm Face) \ Metal Egg-Crate Fixed Core + OBD	RAL9016
248596 F/C	250 x 250mm Neck (295x295mm Face) \ Metal Egg-Crate Fixed Core	RAL9010
248596/7E	250 x 250mm Neck (295x295mm Face) \ Metal Egg-Crate Fixed Core + OBD	RAL9010
248596 F/C RAL9016	250 x 250mm Neck (295x295mm Face) \ Metal Egg-Crate Fixed Core	RAL9016
248596/7E RAL9016	250 x 250mm Neck (295x295mm Face) \ Metal Egg-Crate Fixed Core + OBD	RAL9016
248597 F/C	300 x 300mm Neck (345x345mm Face) \ Metal Egg-Crate Fixed Core	RAL9010
248597/8	300 x 300mm Neck (345x345mm Face) \ Metal Egg-Crate Fixed Core + OBD	RAL9010
248597 F/C RAL9016	300 x 300mm Neck (345x345mm Face) \ Metal Egg-Crate Fixed Core	RAL9016
248597/8 RAL9016	300 x 300mm Neck (345x345mm Face) \ Metal Egg-Crate Fixed Core + OBD	RAL9016
248598 F/C	350 x 350mm Neck (395x395mm Face) \ Metal Egg-Crate Fixed Core	RAL9010
248598/9E	350 x 350mm Neck (395x395mm Face) \ Metal Egg-Crate Fixed Core + OBD	RAL9010
248598 F/C RAL9016	350 x 350mm Neck (395x395mm Face) \ Metal Egg-Crate Fixed Core	RAL9016
248598/9E RAL9016	350 x 350mm Neck (395x395mm Face) \ Metal Egg-Crate Fixed Core + OBD	RAL9016
248603 F/C	400 x 400mm Neck (445x445mm Face) \ Metal Egg-Crate Fixed Core	RAL9010
248603/10E	400 x 400mm Neck (445x445mm Face) \ Metal Egg-Crate Fixed Core + OBD	RAL9010
248603 F/C RAL9016	400 x 400mm Neck (445x445mm Face) \ Metal Egg-Crate Fixed Core	RAL9016
248603/10E RAL9016	400 x 400mm Neck (445x445mm Face) \ Metal Egg-Crate Fixed Core + OBD	RAL9016
248604 F/C	450 x 450mm Neck (495x495mm Face) \ Metal Egg-Crate Fixed Core	RAL9010
248604/10	450 x 450mm Neck (495x495mm Face) \ Metal Egg-Crate Fixed Core + OBD	RAL9010
248604 F/C RAL9016	450 x 450mm Neck (495x495mm Face) \ Metal Egg-Crate Fixed Core	RAL9016
248604/10 RAL9016	450 x 450mm Neck (495x495mm Face) \ Metal Egg-Crate Fixed Core + OBD	RAL9016
248605 F/C	500 x 500mm Neck (545x545mm Face) \ Metal Egg-Crate Fixed Core	RAL9010
248605/11E	500 x 500mm Neck (545x545mm Face) \ Metal Egg-Crate Fixed Core + OBD	RAL9010
248605 F/C RAL9016	500 x 500mm Neck (545x545mm Face) \ Metal Egg-Crate Fixed Core	RAL9016
248605/11E RAL9016	500 x 500mm Neck (545x545mm Face) \ Metal Egg-Crate Fixed Core + OBD	RAL9016
248610 F/C	595 x 595mm (Face size) 550x550 Neck \ Metal Egg-Crate Fixed Core	RAL9010
248610/12E	595 x 595mm (Face size) 550x550 Neck \ Metal Egg-Crate Fixed Core + OBD	RAL9010
248610 F/C RAL9016	595 x 595mm (Face size) 550x550 Neck \ Metal Egg-Crate Fixed Core	RAL9016
248610/12E RAL9016	595 x 595mm (Face size) 550x550 Neck \ Metal Egg-Crate Fixed Core + OBD	RAL9016
248610 F/C RAL9005	595 x 595mm (Face size) 550x550 Neck \ Metal Egg-Crate Fixed Core	RAL 9005 Black * NEW *
248610/12E RAL9005	595 x 595mm (Face size) 550x550 Neck \ Metal Egg-Crate Fixed Core + OBD	RAL 9005 Black * NEW *



**Metal Egg Crate Grille (Removable Core)
(RAL 9010)**

248593 REM-C	150 x 150mm Egg-Crate Removable Core (145 x 145mm Neck / 194 x 194mm Face)	
248595 REM-C	200 x 200mm Egg-Crate Removable Core (195 x 195mm Neck / 244 x 244mm Face)	
248596 REM-C	250 x 250mm Egg-Crate Removable Core (245 x 245mm Neck / 294 x 294mm Face)	
248597 REM-C	300 x 300mm Egg-Crate Removable Core (295 x 295mm Neck / 344 x 344mm Face)	
248598 REM-C	350 x 350mm Egg-Crate Removable Core (345 x 345mm Neck / 394 x 394mm Face)	
248603 REM-C	400 x 400mm Egg-Crate Removable Core (395 x 395mm Neck / 445 x 445mm Face)	**NEW**
248604 REM-C	450 x 450mm Egg-Crate Removable Core (445 x 445mm Neck / 495 x 495mm Face)	**NEW**
248610 REM-C	550 x 550mm Egg-Crate Removable Core (545 x 545mm Neck / 595 x 595mm Face)	

**RAG with removable filter (Metal)
(RAL 9010)**



247207	Metal 595 x 595mm (Face) / 550x550 (Neck) Return Air Grille + removable Filter / Hinged
247207F	Filter for Return Air Grille / Hinged (247207)



**Double Tile 4 Way Blow LFD
(RAL 9010)**

248100	1195 x 595mm (Face size) 1050x450 Neck Size / 4 Way Blow LFD
248100 + OBD	1195 x 595mm (Face size) 1050x450 Neck Size / 4 Way Blow LFD + OBD



**Double Tile Egg Crate
(RAL 9010)**

248619 F/C	1195 x 595mm (Face size) 1150x550mm Neck Size / Metal Egg-Crate Fixed Core
248619 F/C + OBD	1195 x 595mm (Face size) 1150x550mm Neck Size / Metal Egg-Crate Fixed Core + OBD



**OBD
(Anodised black)**

248006/1E	OBD 100 x 100mm \ Opposed Blade Damper
248006	OBD 150 x 150mm \ Opposed Blade Damper
248006E	OBD 200 x 200mm \ Opposed Blade Damper
248007	OBD 225 x 225mm \ Opposed Blade Damper
248007E	OBD 250 x 250mm \ Opposed Blade Damper
248008	OBD 300 x 300mm \ Opposed Blade Damper
248009E	OBD 350 x 350mm \ Opposed Blade Damper
248009	OBD 375 x 375mm \ Opposed Blade Damper
248010E	OBD 400 x 400mm \ Opposed Blade Damper
248010	OBD 450 x 450mm \ Opposed Blade Damper
248011E	OBD 500 x 500mm \ Opposed Blade Damper
248012	OBD 600 x 600mm \ Opposed Blade Damper
248012E	OBD 547 x 547mm (to fit fixed core 595sq Egg Crate) \ Opposed Blade Damper
248012E-DE	OBD 547 x 547 (to fit fixed core 595sq Egg Crate) \ Double Bank OBD



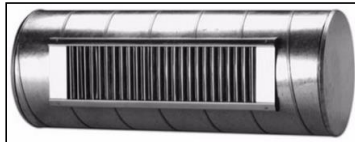
Linear Bar Grille
(can be painted to any colour required)
Made To Order

249000/FC	Linear Bar Grill - ***mm X ***mm / Fixed Core
249001/HC	Linear Bar Grill - ***mm X ***mm / Hinged Core
249002/RC	Linear Bar Grill - ***mm X ***mm / Removable Core
•	• Available with either 0°, 15° or 45° blades pitched
•	• Can be supplied with or without damper
•	• Mill finish / Can also be supplied powder coated to any colour to suit your requirements



Linear Slot Diffuser
(can be painted to any colour required)
Made To Order

249003/Slot	Linear Slot Diffuser - ***mm X ***mm / # Slots
-------------	--



Spiral Duct Grille
(Mill Finish)
** Non-stock **

249101	525mm x 75mm Spiral Duct Grille / Double Deflection / Duct Size 160-400
249101/OBD	525mm x 75mm Spiral Duct Grille / Double Deflection / Duct Size 160-400 + Damper
249102	425mm x 125mm Spiral Duct Grille / Double Deflection / Duct Size 250-900
249102/OBD	425mm x 125mm Spiral Duct Grille / Double Deflection / Duct Size 250-900 + Damper
249103	525mm x 125mm Spiral Duct Grille / Double Deflection / Duct Size 250-900
249103/OBD	525mm x 125mm Spiral Duct Grille / Double Deflection / Duct Size 250-900 + Damper
249104	625mm x 125mm Spiral Duct Grille / Double Deflection / Duct Size 250-900
249104/OBD	625mm x 125mm Spiral Duct Grille / Double Deflection / Duct Size 250-900 + Damper
249105	425mm x 225mm Spiral Duct Grille / Double Deflection / Duct Size 500-1400
249105/OBD	425mm x 225mm Spiral Duct Grille / Double Deflection / Duct Size 500-1400 + Damper
249106	525mm x 225mm Spiral Duct Grille / Double Deflection / Duct Size 500-1400
249106/OBD	525mm x 225mm Spiral Duct Grille / Double Deflection / Duct Size 500-1400 + Damper



PSB Swirl Diffuser
(RAL 9010 & RAL 9016)

PSB

247094	PSB 595 x 595 / 254 Swirl Diffuser
247094/RAL 9016	PSB 595 x 595 / 254 Swirl Diffuser *RAL 9016*
247095	PSB 595 x 595 / 336 Swirl Diffuser
247095/RAL 9016	PSB 595 x 595 / 336 Swirl Diffuser *RAL 9016*
247096	PSB 595 x 595 / 440 Swirl Diffuser
247096/RAL 9016	PSB 595 x 595 / 440 Swirl Diffuser *RAL 9016*
247097	PSB 595 x 595 / 530 Swirl Diffuser
247097/RAL 9016	PSB 595 x 595 / 530 Swirl Diffuser *RAL 9016*
247097/TEG8 - 9010	PSB 595 x 595 / 530 Swirl Diffuser / TEGULAR Drop / RAL9010 ** NEW **
247097/TEG16 - 9010	PSB 595 x 595 / 530 Swirl Diffuser / TEGULAR Drop / RAL9010 ** NEW **



PSC Swirl Diffuser
(RAL 9010)

PSC

247098	PSC 595 x 595 / 254 Swirl Diffuser (Non-Stock Item - Available to order only - Minimum Quantity)
247099	PSC 595 x 595 / 356 Swirl Diffuser (Non-Stock Item - Available to order only - Minimum Quantity)
247100	PSC 595 x 595 / 457 Swirl Diffuser (Non-Stock Item - Available to order only - Minimum Quantity)
247101	PSC 595 x 595 / 535 Swirl Diffuser (RAL 9010) (Stock Item - only in this size)

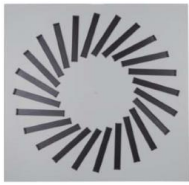


**ODS Swirl Diffuser
(RAL 9010)**



ODS Circular

247525	Circular Swirl - 254mm Ø Neck / 300mm dia Face - ODS Metal (RAL 9010)
247535	Circular Swirl - 350mm Ø Neck / 400mm dia Face - ODS Metal (RAL 9010)
247545	Circular Swirl - 450mm Ø Neck / 500mm dia Face - ODS Metal (RAL 9010)
247554	Circular Swirl - 540mm Ø Neck / 600mm dia Face - ODS Metal (RAL 9010)



**Adjustable Swirl Diffuser (ASWD - 24/36/48)
(RAL 9010 only)**

247102	ASWD - Adjustable Swirl Diffuser 595x595mm / 24 Adjustable Blades / RAL9010 only	
247103	ASWD - Adjustable Swirl Diffuser 595x595mm / 36 Adjustable Blades / RAL9010 only	**NEW**
247104	ASWD - Adjustable Swirl Diffuser 595x595mm / 48 Adjustable Blades / RAL9010 only	**NEW**



**Fixed Vane Swirl - Circular (RSW)
(RAL 9010 - Metal)**



247555	RSW - Fixed Vane Swirl Diffuser / Circular / 160mm Ø neck (250mm dia Face)
247556	RSW - Fixed Vane Swirl Diffuser / Circular / 200mm Ø neck (300mm dia Face)
247557	RSW - Fixed Vane Swirl Diffuser / Circular / 250mm Ø neck (350mm dia Face)
247558	RSW - Fixed Vane Swirl Diffuser / Circular / 315mm Ø neck (450mm dia Face)
247559	RSW - Fixed Vane Swirl Diffuser / Circular / 350mm Ø neck (520mm dia Face)
247560	RSW - Fixed Vane Swirl Diffuser / Circular / 400mm Ø neck (570mm dia Face)



**Floor Swirl (AFSD-A)
(Standard Aluminium Finish)**



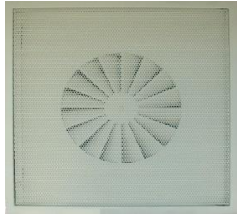
247150	AFSD-A 150mm dia Aluminium Floor Swirl	**NEW**
247200	AFSD-A 200mm dia Aluminium Floor Swirl	**NEW**



**Perforated Face Swirl Diffuser
(Circular)**

Made To Order

248103	160mm dia Round Perforated Face Swirl Diffuser (280mm Ø Face Size)
248104	250mm dia Round Perforated Face Swirl Diffuser (380mm Ø Face Size)
248105	315mm dia Round Perforated Face Swirl Diffuser (440mm Ø Face Size)
248106	400mm dia Round Perforated Face Swirl Diffuser (540mm Ø Face Size)



Perforated Face Swirl Diffuser (Square)

Made To Order

248108 NF	595 x 595mm Perforated Face Swirl Diffuser 160mm Ø (Fixed c/w No frame)
248109 NF	595 x 595mm Perforated Face Swirl Diffuser 250mm Ø (Fixed c/w No frame)
248110 NF	595 x 595mm Perforated Face Swirl Diffuser 315mm Ø (Fixed c/w No frame)
248111 NF	595 x 595mm Perforated Face Swirl Diffuser 400mm Ø (Fixed c/w No frame)
248112 NF	595 x 595mm Perforated Face Swirl Diffuser 450mm Ø (Fixed c/w No frame)

248108	595 x 595mm Perforated Face Swirl Diffuser 160mm Ø (Fixed c/w frame)
248109	595 x 595mm Perforated Face Swirl Diffuser 250mm Ø (Fixed c/w frame)
248110	595 x 595mm Perforated Face Swirl Diffuser 315mm Ø (Fixed c/w frame)
248111	595 x 595mm Perforated Face Swirl Diffuser 400mm Ø (Fixed c/w frame)
248112	595 x 595mm Perforated Face Swirl Diffuser 450mm Ø (Fixed c/w frame)

248113	595 x 595mm Perforated Face Swirl Diffuser 160mm Ø / Hinged
248114	595 x 595mm Perforated Face Swirl Diffuser 250mm Ø / Hinged
248115	595 x 595mm Perforated Face Swirl Diffuser 315mm Ø / Hinged
248116	595 x 595mm Perforated Face Swirl Diffuser 400mm Ø / Hinged
248117	595 x 595mm Perforated Face Swirl Diffuser 450mm Ø / Hinged



Round Ceiling Diffuser (RAL 9010 - Metal)

238150	150mm - Round Ceiling Diffuser - 148mm Ø Neck / 300mm Ø Face
238200	200mm - Round Ceiling Diffuser - 198mm Ø Neck / 350mm Ø Face
238250	250mm - Round Ceiling Diffuser - 248mm Ø Neck / 400mm Ø Face
238300	300mm - Round Ceiling Diffuser - 299mm Ø Neck / 450mm Ø Face
238350	350mm - Round Ceiling Diffuser - 348mm Ø Neck / 500mm Ø Face
238400	400mm - Round Ceiling Diffuser - 398mm Ø Neck / 560mm Ø Face

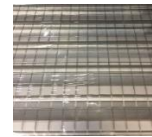


Round Ceiling Diffuser - Adjustable (RAL 9010 - Metal)

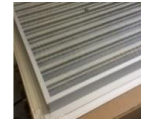
220150	150mm Round Ceiling Diffuser - Adjustable (152mm Ø Neck / 335mm Ø Face)
220200	200mm Round Ceiling Diffuser - Adjustable (200mm Ø Neck / 423mm Ø Face)
220250	250mm Round Ceiling Diffuser - Adjustable (250mm Ø Neck / 517mm Ø Face)
220300	300mm Round Ceiling Diffuser - Adjustable (300mm Ø Neck / 640mm Ø Face)
220350	350mm Round Ceiling Diffuser - Adjustable (350mm Ø Neck / 730mm Ø Face)



**Outside Air Louvre
(Natural Anodised)
(Bird Mesh or Insect Mesh)
(Standard 35mm Pitch)**



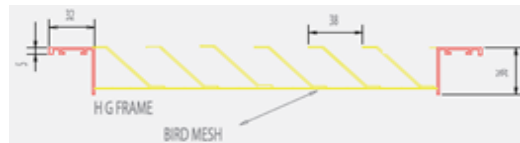
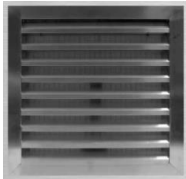
Bird Mesh



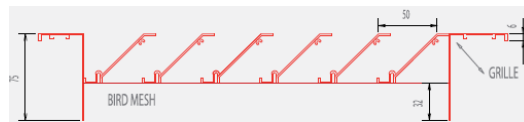
Insect Mesh

243399	Outside Air Louvre 150 x 150mm Neck (204x204mm Face) + Bird Mesh
243399+IM	Outside Air Louvre 150 x 150mm Neck (204x204mm Face) + Insect Mesh
244000	Outside Air Louvre 200 x 200mm Neck (254x254mm Face) + Bird Mesh
244000+IM	Outside Air Louvre 200 x 200mm Neck (254x254mm Face) + Insect Mesh
244000/A	Outside Air Louvre 225 x 225mm Neck (279x279mm Face) + Bird Mesh
244000/A+IM	Outside Air Louvre 225 x 225mm Neck (279x279mm Face) + Insect Mesh
244001	Outside Air Louvre 250 x 250mm Neck (304x304mm Face) + Bird Mesh
244001+IM	Outside Air Louvre 250 x 250mm Neck (304x304mm Face) + Insect Mesh
244002	Outside Air Louvre 300 x 300mm Neck (354x354mm Face) + Bird Mesh
244002+IM	Outside Air Louvre 300 x 300mm Neck (354x354mm Face) + Insect Mesh
244003	Outside Air Louvre 350 x 350mm Neck (404x404mm Face) + Bird Mesh
244003+IM	Outside Air Louvre 350 x 350mm Neck (404x404mm Face) + Insect Mesh
244004	Outside Air Louvre 400 x 400mm Neck (454x454mm Face) + Bird Mesh
244004+IM	Outside Air Louvre 400 x 400mm Neck (454x454mm Face) + Insect Mesh
244005	Outside Air Louvre 450 x 450mm Neck (504x504mm Face) + Bird Mesh
244005+IM	Outside Air Louvre 450 x 450mm Neck (504x504mm Face) + Insect Mesh
244244	Outside Air Louvre 500 x 500mm Neck (554x554mm Face) + Bird Mesh
244244+IM	Outside Air Louvre 500 x 500mm Neck (554x554mm Face) + Insect Mesh
244245	Outside Air Louvre 550 x 550mm Neck (604x604mm Face) + Bird Mesh
244245+IM	Outside Air Louvre 550 x 550mm Neck (604x604mm Face) + Insect Mesh
244247	Outside Air Louvre 600 x 600mm Neck (654x654mm Face) + Bird Mesh
244247+IM	Outside Air Louvre 600 x 600mm Neck (654x654mm Face) + Insect Mesh

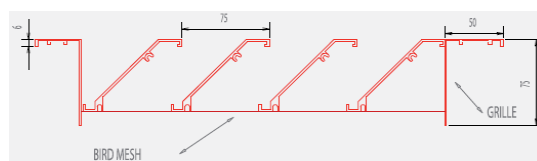
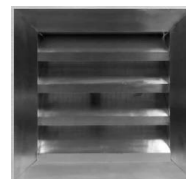
**Outside Air Louvres Made To Order
(Non-Standard size)**



38mm Pitch



50mm Pitch



75mm Pitch



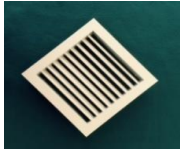
**Circular Outside Louvre
(Mill Finish)**

244301	100mm Ø Circular Outside Louvre (95mm Spigot Size/ 122mm Flange Size)
244302	125mm Ø Circular Outside Louvre (120mm Spigot Size/ 150mm Flange Size)
244303	150mm Ø Circular Outside Louvre (145mm Spigot Size/ 178mm Flange Size)
244304	160mm Ø Circular Outside Louvre (155mm Spigot Size/ 180mm Flange Size)
244305	200mm Ø Circular Outside Louvre (195mm Spigot Size/ 222mm Flange Size)
244306	250mm Ø Circular Outside Louvre (245mm Spigot Size/ 275mm Flange Size)
244308	315mm Ø Circular Outside Louvre (310mm Spigot Size/ 345mm Flange Size)
244309	400mm Ø Circular Outside Louvre (395mm Spigot Size/ 440mm Flange Size)



Double Deflection Grille (RAL 9010 - Metal)

246150	150 x 150mm Neck (195x195 Face) Double Deflection Grille
246150/5E	150 x 150mm Neck (195x195 Face) Double Deflection Grille + OBD
246200	200 x 200mm Neck (245x245 Face) Double Deflection Grille
246200/6E	200 x 200mm Neck (245x245 Face) Double Deflection Grille + OBD
246250	250 x 250mm Neck (295x295 Face) Double Deflection Grille
246250/7E	250 x 250mm Neck (295x295 Face) Double Deflection Grille + OBD
246300	300 x 300mm Neck (345x345 Face) Double Deflection Grille
246300/8E	300 x 300mm Neck (345x345 Face) Double Deflection Grille + OBD
246350	350 x 350mm Neck (395x395 Face) Double Deflection Grille
246350/9E	350 x 350mm Neck (395x395 Face) Double Deflection Grille + OBD
246400	400 x 400mm Neck (445x445 Face) Double Deflection Grille
246400/10E	400 x 400mm Neck (445x445 Face) Double Deflection Grille + OBD
246450	450 x 450mm Neck (495x495 Face) Double Deflection Grille
246400/10	450 x 450mm Neck (495x495 Face) Double Deflection Grille + OBD
246550	550 x 550mm Neck (595x595 Face) Double Deflection Grille
246600/11E	550 x 550mm Neck (595x595 Face) Double Deflection Grille + OBD



Single Deflection Grille (RAL 9010 - Metal)

246150S	150 x 150mm Neck (195x195 Face) Single Deflection Grille
246150S/5E	150 x 150mm Neck (195x195 Face) Single Deflection Grille + OBD
246200S	200 x 200mm Neck (245x245 Face) Single Deflection Grille
246200S/6E	200 x 200mm Neck (245x245 Face) Single Deflection Grille + OBD
246250S	250 x 250mm Neck (295x295 Face) Single Deflection Grille
246250S/7E	250 x 250mm Neck (295x295 Face) Single Deflection Grille + OBD
246300S	300 x 300mm Neck (345x345 Face) Single Deflection Grille
246300S/8E	300 x 300mm Neck (345x345 Face) Single Deflection Grille + OBD
246350S	350 x 350mm Neck (395x395 Face) Single Deflection Grille
246350S/9E	350 x 350mm Neck (395x395 Face) Single Deflection Grille + OBD
246400S	400 x 400mm Neck (445x445 Face) Single Deflection Grille
246400S/10E	400 x 400mm Neck (445x445 Face) Single Deflection Grille + OBD



Supply & Extract Air Valve (Metal - RAL 9010 & RAL9016)

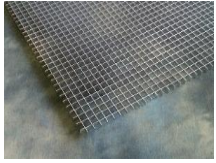
237210	100mm Ø Supply Valve
237210-RAL9016	100mm Ø Supply Valve - RAL9016
237212	125mm Ø Supply Valve
237212-RAL9016	125mm Ø Supply Valve - RAL9016
237215	150mm Ø Supply Valve
237215-RAL9016	150mm Ø Supply Valve - RAL9016
237216	160mm Ø Supply Valve
237216-RAL9016	160mm Ø Supply Valve - RAL9016
237220	200mm Ø Supply Valve
237220-RAL9016	200mm Ø Supply Valve - RAL9016

237210E	100mm Ø Extract Valve
237210E-RAL9016	100mm Ø Extract Valve - RAL9016
237212E	125mm Ø Extract Valve
237212E-RAL9016	125mm Ø Extract Valve - RAL9016
237215E	150mm Ø Extract Valve
237215E-RAL9016	150mm Ø Extract Valve - RAL9016
237216E	160mm Ø Extract Valve
237216E-RAL9016	160mm Ø Extract Valve - RAL9016
237220E	200mm Ø Extract Valve
237220E-RAL9016	200mm Ø Extract Valve - RAL9016



Fire Rated Air Valve / Supply & Extract (Metal - RAL9016 only)

237210-FR-9016	100mm Ø Supply Valve - RAL9016 - FIRE RATED	** NEW **
237210E-FR-9016	100mm Ø Extract Valve - RAL9016 - FIRE RATED	** NEW **
237215-FR-9016	150mm Ø Supply Valve - RAL9016 - FIRE RATED	** NEW **
237215E-FR-9016	150mm Ø Extract Valve - RAL9016 - FIRE RATED	** NEW **
237220-FR-9016	200mm Ø Supply Valve - RAL9016 - FIRE RATED	** NEW **
237220E-FR-9016	200mm Ø Extract Valve - RAL9016 - FIRE RATED	** NEW **



Egg Crate Sheet

997002	Egg Crate Sheet, 1200 x 1200	* Sold in boxes only (10 sheets per box) *
997002-45	Egg Crate Sheet, 1200 x 1200-45 degree (White / RAL9010)	* Sold in boxes only (10 sheets per box) *



Round Ceiling Diffuser (ABS Plastic)

235384	150mm Ø Neck (265mm Face Size) Round Ceiling Diffuser (Plastic)
237100	200mm Ø Neck (318mm Face Size) Round Ceiling Diffuser (Plastic)
237101	250mm Ø Neck (390mm Face Size) Round ceiling Diffuser (Plastic)
237102	300mm Ø Neck (441mm Face Size) Round Ceiling Diffuser (Plastic)



Round Jet Diffuser (ABS Plastic)

235446	Jet Diffuser 150mm Ø (145mm Neck Size / 240mm Face Size) Roundjet
235447	Jet Diffuser 200mm Ø (195mm Neck Size / 290mm Face Size) Roundjet



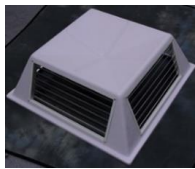
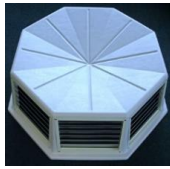
MDO-X (ABS Plastic)

231200	MDOX 230 x 230mm Neck (283x283mm Face Size) 4 way Multi Directional Outlet
231201	MDOX 300 x 300mm Neck (353x353mm Face Size) 4 way Multi Directional Outlet
231202	MDOX 350 x 350mm Neck (408x408mm Face Size) 4 way Multi Directional Outlet
231203	MDOX 400 x 400mm Neck (456x456mm Face Size) 4 way Multi Directional Outlet
231204	MDOX 450 x 450mm Neck (506x506mm Face Size) 4 way Multi Directional Outlet
231205	MDOX 525 x 350mm Neck (581x406mm Face Size) 6 way Multi Directional Outlet

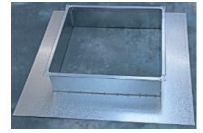
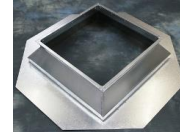
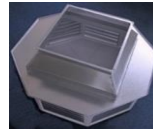


Motorised Zone Damper (Comes fitted with 240v Motor) (Simple switch operation / open or closed)

532000	MZD 150mm Ø Motorised Zone Damper Insulated (240V)
532001	MZD 200mm Ø Motorised Zone Damper Insulated (240V)
532002	MZD 250mm Ø Motorised Zone Damper Insulated (240V)
532003	MZD 300mm Ø Motorised Zone Damper Insulated (240V)
532004	MZD 350mm Ø Motorised Zone Damper Insulated (240V)
532005	MZD 400mm Ø Motorised Zone Damper Insulated (240V)
532013	240v Damper Motor
532030	24v Damper Motor

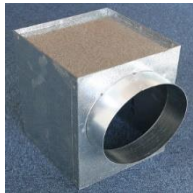
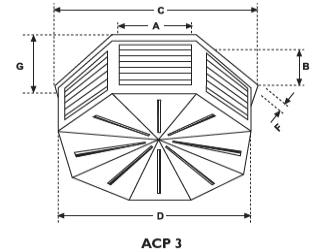
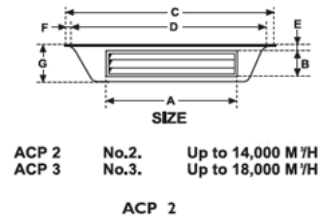


Evaporative Plenum
(ACP2 - 4 Sided)
(ACP3 - 8 Sided)



242625	ACP2 Evaporative Plenum 4 sided
242625ASS	ACP2 Evaporative Plenum 4 sided + Adaptor Plate with 550mm Spigot
242626	ACP3 Evaporative Plenum 8 sided
242626ASS	ACP3 Evaporative Plenum 8 sided + Adaptor Plate with 550mm Spigot
ACP3 Special	ACP3 Evaporative Plenum 8 sided / Full Stainless Steel **Special Order Only**

MODEL DIMENSIONS	ACP 2	ACP 3
A	560	350
B	270	240
C	890	1100
D	820	960
E	30	40
F	35	35
G	290	310



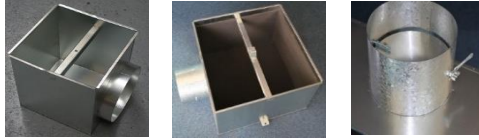
Side Entry Plenum Box (Metal)
(Also available with 6mm or 12mm Lining)
Made To Order

PSE 150	Metal Side Entry Plenum Box \ PSE 150 x 150mm - up to 150mm Ø Spigot
PSE 200	Metal Side Entry Plenum Box \ PSE 200 x 200mm - up to 200mm Ø Spigot
PSE 225	Metal Side Entry Plenum Box \ PSE 225 x 225mm - up to 200mm Ø Spigot
PSE 230	Metal Side Entry Plenum Box \ PSE 230 x 230mm - up to 200mm Ø Spigot
PSE 250	Metal Side Entry Plenum Box \ PSE 250 x 250mm - up to 250mm Ø Spigot
PSE 300	Metal Side Entry Plenum Box \ PSE 300 x 300mm - up to 300mm Ø Spigot
PSE 350	Metal Side Entry Plenum Box \ PSE 350 x 350mm - up to 350mm Ø Spigot
PSE 375	Metal Side Entry Plenum Box \ PSE 375 x 375mm - up to 350mm Ø Spigot
PSE 380	Metal Side Entry Plenum Box \ PSE 380 x 380mm - up to 350mm Ø Spigot
PSE 400	Metal Side Entry Plenum Box \ PSE 400 x 400mm - up to 400mm Ø Spigot
PSE 450	Metal Side Entry Plenum Box \ PSE 450 x 450mm - up to 450mm Ø Spigot
PSE 500	Metal Side Entry Plenum Box \ PSE 500 x 500mm - up to 450mm Ø Spigot
PSE 550	Metal Side Entry Plenum Box \ PSE 550 x 550mm - up to 450mm Ø Spigot
PSE 600	Metal Side Entry Plenum Box \ PSE 600 x 600mm - up to 450mm Ø Spigot
PSE Special	Metal Side Entry Plenum Box \ PSE *** x *** mm
PSE EC Double Tile	Metal Side Entry Plenum Box \ Double Tile \ PSE 1155 x 555mm - up to 550mm Spigot
PSE LFD Double Tile	Metal Side Entry Plenum Box \ Double Tile \ PSE 1055 x 455mm - up to 450mm Spigot



Top Entry Plenum Box (Metal)
(Also available with 6mm or 12mm Lining)
Made To Order

670144 TLO	Metal Top Entry Plenum Box \ 150 x 150mm - up to 150mm Spigot
670145 TLO	Metal Top Entry Plenum Box \ 200 x 200mm - up to 200mm Spigot
670146 TLO	Metal Top Entry Plenum Box \ 225 x 225mm - up to 200mm Spigot
670147 TLO	Metal Top Entry Plenum Box \ 250 x 250mm - up to 250mm Spigot
670148 TLO	Metal Top Entry Plenum Box \ 300 x 300mm - up to 300mm Spigot
670149 TLO	Metal Top Entry Plenum Box \ 350 x 350mm - up to 350mm Spigot
670149 TLO 375	Metal Top Entry Plenum Box \ 375 x 375mm - up to 350mm Spigot
670150 TLO	Metal Top Entry Plenum Box \ 400 x 400mm - up to 400mm Spigot
670151 TLO	Metal Top Entry Plenum Box \ 450 x 450mm - up to 450mm Spigot
670152 TLO	Metal Top Entry Plenum Box \ 550 x 550mm - up to 450mm Spigot
670153 Special	Metal Top Entry Plenum Box \ **** x ****mm - up to 450mm Spigot
670154 TLO	Metal Top Entry Plenum Box \ 600 x 600mm - up to 450mm Spigot
670155 TLO	Metal Top Entry Plenum Box for LFD Tile 1055 x 455mm - up to 450mm dia Spigot
670156 TLO	Metal Top Entry Plenum Box for Egg-crate Tile 1155 x 555mm - up to 450mm dia Spigot



Swirl Plenum Box (For PSB/PSC/ASWD Swirls)

Made To Order

660154 S	Swirl Diffuser Plenum Box \ Side Entry - Unlined
660154 S	Swirl Diffuser Plenum Box \ Side Entry - Lined
660154 S	Swirl Diffuser Plenum Box \ Side Entry + Damper - Unlined
660154 S	Swirl Diffuser Plenum Box \ Side Entry + Damper - Lined
660154 T	Swirl Diffuser Plenum Box \ Top Entry - Unlined
660154 T	Swirl Diffuser Plenum Box \ Top Entry - Lined
660154 T	Swirl Diffuser Plenum Box \ Top Entry + Damper - Unlined
660154 T	Swirl Diffuser Plenum Box \ Top Entry + Damper - Lined

Fire Resistant Lining (Please call for exact pricing on size required)

Box Lining/S	6mm or 12mm Fire Resistant Lining for Metal Side Entry Plenum Box/150mm -600mm
Box Lining/T	6mm or 12mm Fire Resistant Lining for Top Entry Plenum Box/150mm-600mm



ODS Circular Swirl Plenum Boxes

Made To Order



CSE 254	ODS Swirl Plenum Box to fit 254mm dia (Neck) Circular Swirl \ Side Entry
CSE 254 + Lining	ODS Swirl Plenum Box to fit 254mm dia (Neck) Circular Swirl \ Side Entry + Lined
CSE 350	ODS Swirl Plenum Box to fit 350mm dia (Neck) Circular Swirl \ Side Entry
CSE 350 + Lining	ODS Swirl Plenum Box to fit 350mm dia (Neck) Circular Swirl \ Side Entry + Lined
CSE 450	ODS Swirl Plenum Box to fit 450mm dia (Neck) Circular Swirl \ Side Entry
CSE 450 + Lining	ODS Swirl Plenum Box to fit 450mm dia (Neck) Circular Swirl \ Side Entry + Lined
CSE 540	ODS Swirl Plenum Box to fit 540mm dia (Neck) Circular Swirl \ Side Entry
CSE 540 + Lining	ODS Swirl Plenum Box to fit 540mm dia (Neck) Circular Swirl \ Side Entry + Lined
CTE 254	ODS Swirl Plenum Box to fit 254mm dia (Neck) Circular Swirl \ Top Entry
CTE 254 + Lining	ODS Swirl Plenum Box to fit 254mm dia (Neck) Circular Swirl \ Top Entry + Lined
CTE 350	ODS Swirl Plenum Box to fit 350mm dia (Neck) Circular Swirl \ Top Entry
CTE 350 + Lining	ODS Swirl Plenum Box to fit 350mm dia (Neck) Circular Swirl \ Top Entry + Lined
CTE 450	ODS Swirl Plenum Box to fit 450mm dia (Neck) Circular Swirl \ Top Entry
CTE 450 + Lining	ODS Swirl Plenum Box to fit 450mm dia (Neck) Circular Swirl \ Top Entry + Lined
CTE 540	ODS Swirl Plenum Box to fit 540mm dia (Neck) Circular Swirl \ Top Entry
CTE 540 + Lining	ODS Swirl Plenum Box to fit 540mm dia (Neck) Circular Swirl \ Top Entry + Lined



Extra Spigot/Damper/Hanging Bracket/Flange

Made To Order



Extra Spigot	Extra Spigot for Side and Top Entry Metal Plenum Box (All Sizes)
Extra Damper	Extra for Damper in Spigot for Side and Top Entry Plenum Box (All Sizes)
H/B	Hanging bracket (metal plenum boxes)
Flange	Extra for flange on Side or Top Entry Plenum Box



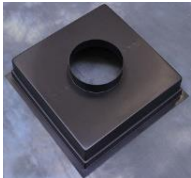
Duct Connector (Metal)

DC100obs	Duct Connector 100mm (Metal)
DC150obs	Duct Connector 150mm (Metal)
DC200obs	Duct Connector 200mm (Metal)
DC250obs	Duct Connector 250mm (Metal)
DC350obs	Duct Connector 350mm (Metal)



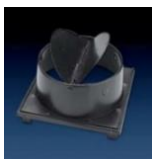
Neck Adapter / Multi Spigot (Plastic)

990005	Neck Adapter \ Multi Spigot \ Plastic \ 150 x 150 - 100/125/150 Ø Spigots
990006	Neck Adapter \ Multi Spigot \ Plastic \ 200 x 200 - 100/150/200 Ø Spigots
990008	Neck Adapter \ Multi Spigot \ Plastic \ 225 x 225 - 100/150/200 Ø Spigots
TBC	Neck Adapter \ Multi Spigot \ Plastic \ 250 x 250 - 100/150/200 Ø Spigots
990007	Neck Adapter \ Multi Spigot \ Plastic \ 300 x 300 - 100/150/200 Ø Spigots
TBC	Neck Adapter \ Multi Spigot \ Plastic \ 350 x 350 - 150/200/250 Ø Spigots
TBC	Neck Adapter \ Multi Spigot \ Plastic \ 375 x 375 - 150/200/250 Ø Spigots
990009	Neck Adapter \ Multi Spigot \ Plastic \ 450 x 450 - 150/200/250 Ø Spigots
990010	Neck Adapter \ Multi Spigot \ Plastic \ 550 x 550 - 150/200/300 Ø Spigots



Neck Adapter (Plastic)

990005	Neck Adapter \ Plastic \ 150 x 150mm - 150mm Ø Spigot
990109	Neck Adapter \ Plastic \ 200 x 200mm - 200mm Ø Spigot
990110	Neck Adapter \ Plastic \ 200 x 200mm - 150mm Ø Spigot
990111	Neck Adapter \ Plastic \ 200 x 200mm - 100mm Ø Spigot
990103	Neck Adapter \ Plastic \ 225 x 225mm - 200mm Ø Spigot
990107	Neck Adapter \ Plastic \ 230 x 230mm - 150mm Ø Spigot
990108	Neck Adapter \ Plastic \ 230 x 230mm - 200mm Ø Spigot
990100	Neck Adapter \ Plastic \ 250 x 250mm - 150mm Ø Spigot
990101	Neck Adapter \ Plastic \ 250 x 250mm - 200mm Ø Spigot
990102	Neck Adapter \ Plastic \ 250 x 250mm - 250mm Ø Spigot
990104	Neck Adapter \ Plastic \ 300 x 300mm - 200mm Ø Spigot
990105	Neck Adapter \ Plastic \ 300 x 300mm - 250mm Ø Spigot
990106	Neck Adapter \ Plastic \ 350 x 350mm - 250mm Ø Spigot
991500	Neck Adapter \ Plastic \ 400 x 400mm - 200mm Ø Spigot
991501	Neck Adapter \ Plastic \ 400 x 400mm - 250mm Ø Spigot
991510	Neck Adapter \ Plastic \ 450 x 450mm - 150mm Ø Spigot
991511	Neck Adapter \ Plastic \ 450 x 450mm - 200mm Ø Spigot
991512	Neck Adapter \ Plastic \ 450 x 450mm - 250mm Ø Spigot
991513	Neck Adapter \ Plastic \ 450 x 450mm - 400mm Ø Spigot
991519	Neck Adapter \ Plastic \ 460 x 460mm - 100mm Ø Spigot
991520	Neck Adapter \ Plastic \ 460 x 460mm - 150mm Ø Spigot
991521	Neck Adapter \ Plastic \ 460 x 460mm - 200mm Ø Spigot
991522	Neck Adapter \ Plastic \ 460 x 460mm - 250mm Ø Spigot
991523	Neck Adapter \ Plastic \ 460 x 460mm - 300mm Ø Spigot
991530	Neck Adapter \ Plastic \ 500 x 500mm - 150mm Ø Spigot
991531	Neck Adapter \ Plastic \ 500 x 500mm - 200mm Ø Spigot
991532	Neck Adapter \ Plastic \ 500 x 500mm - 250mm Ø Spigot
991533	Neck Adapter \ Plastic \ 500 x 500mm - 300mm Ø Spigot
991534	Neck Adapter \ Plastic \ 500 x 500mm - 355mm Ø Spigot
991540	Neck Adapter \ Plastic \ 550 x 550mm - 150mm Ø Spigot
991541	Neck Adapter \ Plastic \ 550 x 550mm - 200mm Ø Spigot
991542	Neck Adapter \ Plastic \ 550 x 550mm - 250mm Ø Spigot
991543	Neck Adapter \ Plastic \ 550 x 550mm - 300mm Ø Spigot
991544	Neck Adapter \ Plastic \ 550 x 550mm - 350mm Ø Spigot
991545	Neck Adapter \ Plastic \ 550 x 550mm - 400mm Ø Spigot



Polyaire Neck Adapter with Damper (To fit MDO-X)

431067	PNA 230-150+D Polyaire Neck Adaptor with Damper
431068	PNA 230-200+D Polyaire Neck Adaptor with Damper
431069	PNA 300-200+D Polyaire Neck Adaptor with Damper
431070	PNA 300-250+D Polyaire Neck Adaptor with damper
431071	PNA 350-300+D Polyaire Neck Adaptor with Damper



Polyaire Neck Adapter (To fit MDO-X)

431056	PNA 230-150 Polyaire Neck Adaptor
431057	PNA 230-200 Polyaire Neck Adaptor
431058	PNA 300-200 Polyaire Neck Adaptor
431059	PNA 300-250 Polyaire Neck Adaptor
431060	PNA 300-300 Polyaire Neck Adaptor
431060A	PNA 350-200 Polyaire Neck Adaptor
431061	PNA 350-300 Polyaire Neck Adaptor
431062	PNA 350-350 Polyaire Neck Adaptor
431063	PNA 400-350 polyaire Neck Adaptor
431064	PNA 400-400 Polyaire Neck Adaptor
431064A	PNA 400-200 Polyaire Neck Adaptor
431065	PNA 450-400 Polyaire Neck Adaptor
431066	PNA 450-450 Polyaire Neck Adaptor
431132	PNA 450-200 Polyaire Neck Adaptor
431133	PNA 500-200 Polyaire Neck Adaptor
231054	Mounting Clips to Suit Polyaire Neck Adaptors



Neck Reducing Plate Triangle Corner Plate Corner Plate

* Made to Order *

992000	NRP 450 x 450 to 150 sq. (with or without Flange - Please specify when ordering)
992001	NRP 450 x 450 to 225 sq. (with or without Flange - Please specify when ordering)
992002	NRP 450 x 450 to 300 sq. (with or without Flange - Please specify when ordering)
992003	NRP 450 x 450 to 375 sq. (with or without Flange - Please specify when ordering)
992004TS150	NRP 150 sq. \ Triangle
992004TS225	NRP 225 sq. \ Triangle
992004TS300	NRP 300 sq. \ Triangle
992004TS375	NRP 375 sq. \ Triangle
992004TS450	NRP 450 sq. \ Triangle
992004TC150	NRP 150 sq. \ Corner
992004TC225	NRP 225 sq. \ Corner
992004TC300	NRP 300 sq. \ Corner
992004TC375	NRP 375 sq. \ Corner
992004TC450	NRP 450 sq. \ Corner

Extra's



866000	50mm Silver Foil Tape
866001	Jubilee Clip 100mm - 525mm Ø
866002	Jubilee Clip 100mm - 270mm Ø
866003	30metre Roll Jubilee Clip Banding
866004	50 x Screw Clips for Jubilee Clip Banding
866005	Duct Sealant (Grey - Per Tube)

* The colour of all products is RAL 9010 unless stated otherwise.

RAL/BS Colour	All metal products can be changed to any RAL or BS colour required. Prices: Up to first 10 items - £75.00 / £6.00 per item thereafter. For exact RAL/BS Colour Code please go to www.ralcolor.com or www.britishstandardcolour.com
Non-standard Sizes	We are also able supply non-standard size products, i.e. Linear Bar or Slot Diffusers / Egg-crates / Louvres etc. Please contact the office for further details & pricing.
Orders	Please state on all enquiries / purchase orders: Our Part Number, Full Description, Size required (Neck/Face in mm) & Colour required. Please send all Enquiries & Purchase Orders to - sales@polyaire.co.uk There is no minimum order quantity.
Delivery	A minimum delivery charge will apply (Courier service only) Please contact the office for exact delivery charges. We do not offer free delivery.
Sales Terms & Conditions	Polyaire UK Terms & Conditions, visit https://www.polyaire.co.uk/polyaire-uk-terms-and-conditions-of-trade/ Alternatively, speak to our sales team who will be happy to send you a copy via email.
Quotations / Estimates	Please note, our Quotations/Estimates are valid for 30 days only. Prices after this date may be subject to change in the event that commodity or other costs increase above the level that our quotation/estimate was based upon. We will always try to deliver next day on stock items. However, leadtimes given are approximate only and may be affected should any delay in materials arise. Any issues will be communicated as soon as possible.
Opening Times	Monday to Thursday - 08:00 to 16:30 Friday's - 08:00 to 13:00
Delivery Info	Parcel Deliveries: Orders to be dispatched for next day delivery must be received before 3pm or 11am on Friday's Pallet Network: All pallet orders for next day delivery must be received before 1pm or 10am on Friday's

Disclaimer:

Prices and product specifications are subject to change without notice. Prices may also be changed without notice due to unforeseen cost increases of imported products, raw materials or currency fluctuations. We carefully check pricing and product specifications, but occasionally errors can occur, therefore we reserve the right to change both without notice. Some products listed may be non-stock items.



© 2024 Polyaire™



POLYAIRE UK
Units 3 & 4, Torridge Close
Telford Way Industrial Estate
Kettering, Northants, NN16 8PY
Phone: 01536 519 922
sales@polyaire.co.uk



www.polyaire.co.uk